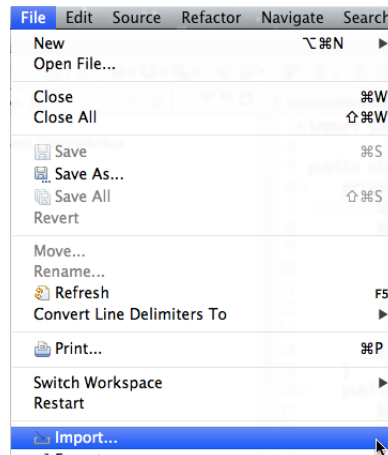


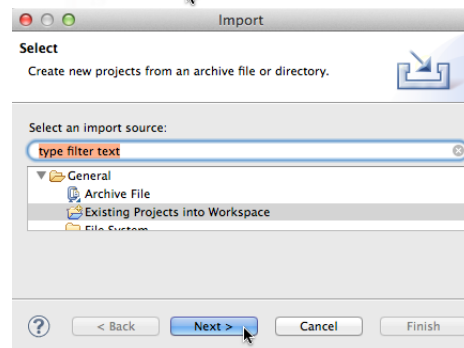
Importing an Eclipse Project

STEP-BY-STEP INSTRUCTIONS

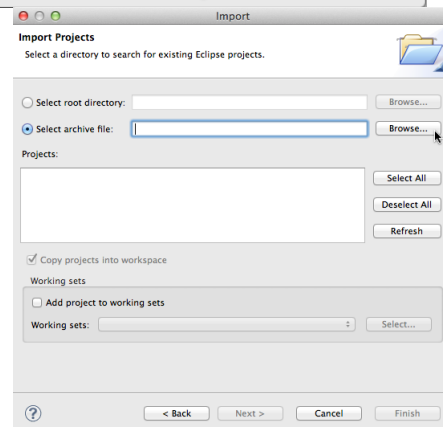
1. Select `Export...` from the `File` menu.



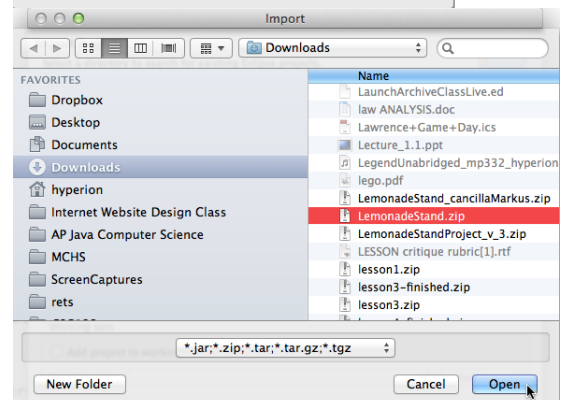
2. Select `General` then `Existing Projects into Workspace` into `Workspace` and click the `"Next >"` button.



3. Click the `"Select archive file:"` radio button then click the `"Browse..."` button.



4. Navigate to the location where the compressed project file is stored then click the `"Open"` button. (**note:** your file dialog box will vary depending upon your operating system)



5. Click the `"Finish"` button in the Archive dialog box.

